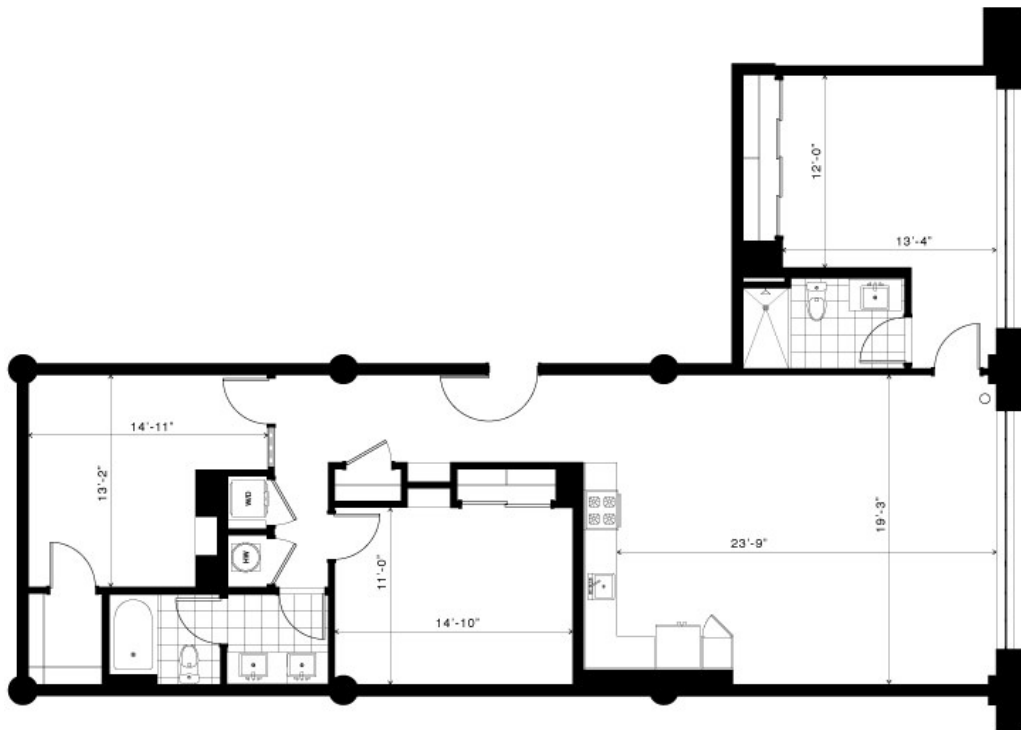


THE CENTENNIAL 1535 - 1570

3 BED / 2 BATH

SQ. FT.



FLATS

AT PONCE CITY MARKET

675 Ponce de Leon Avenue NE | Atlanta, GA 30308

www.flatsatpcm.com

Floor plans are artist's rendering. All dimensions are approximate. Actual product and specifications may vary in dimension or detail. Not all features are available in every apartment. Prices and availability are subject to change. Please see a representative for details.

